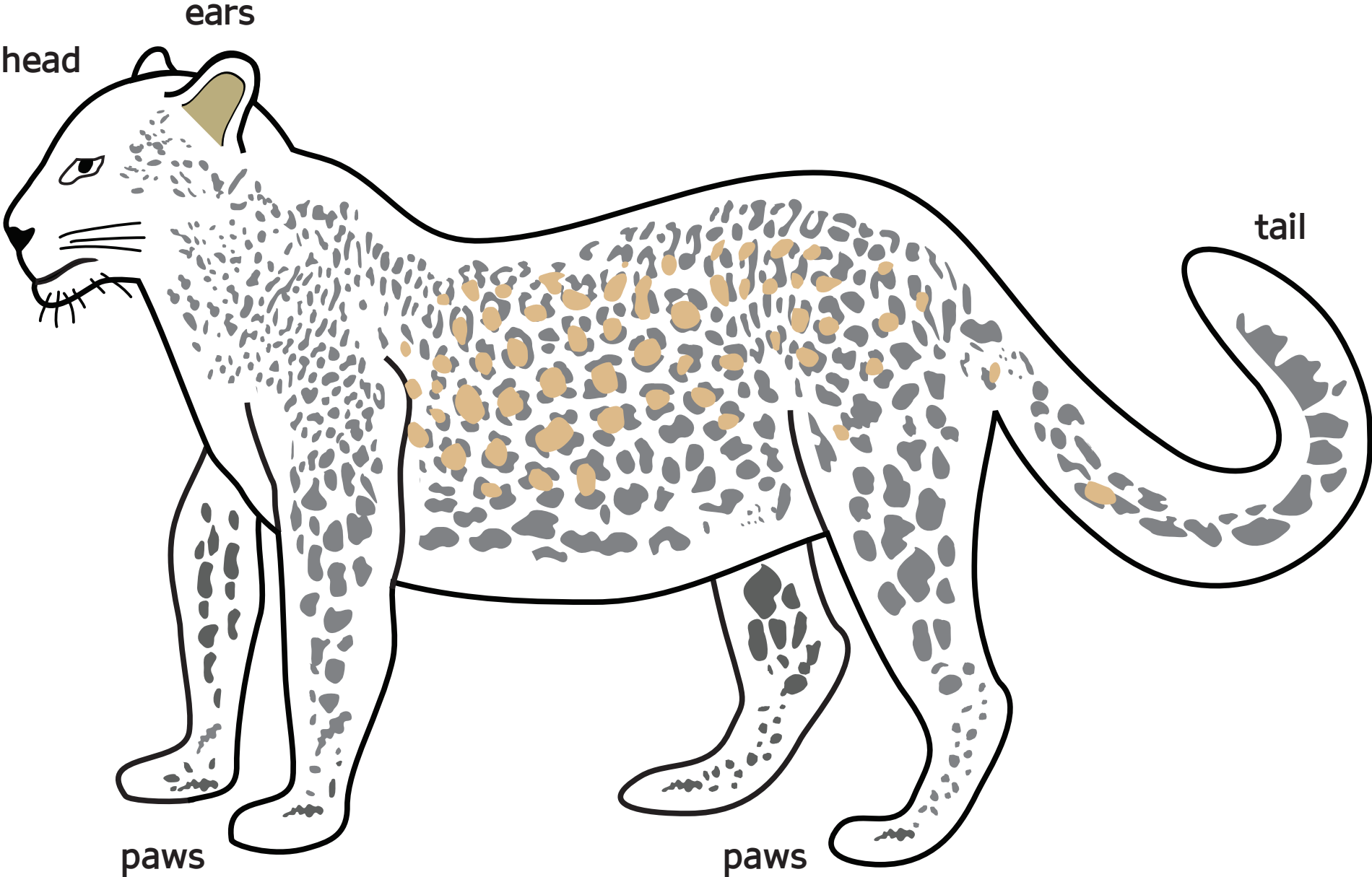
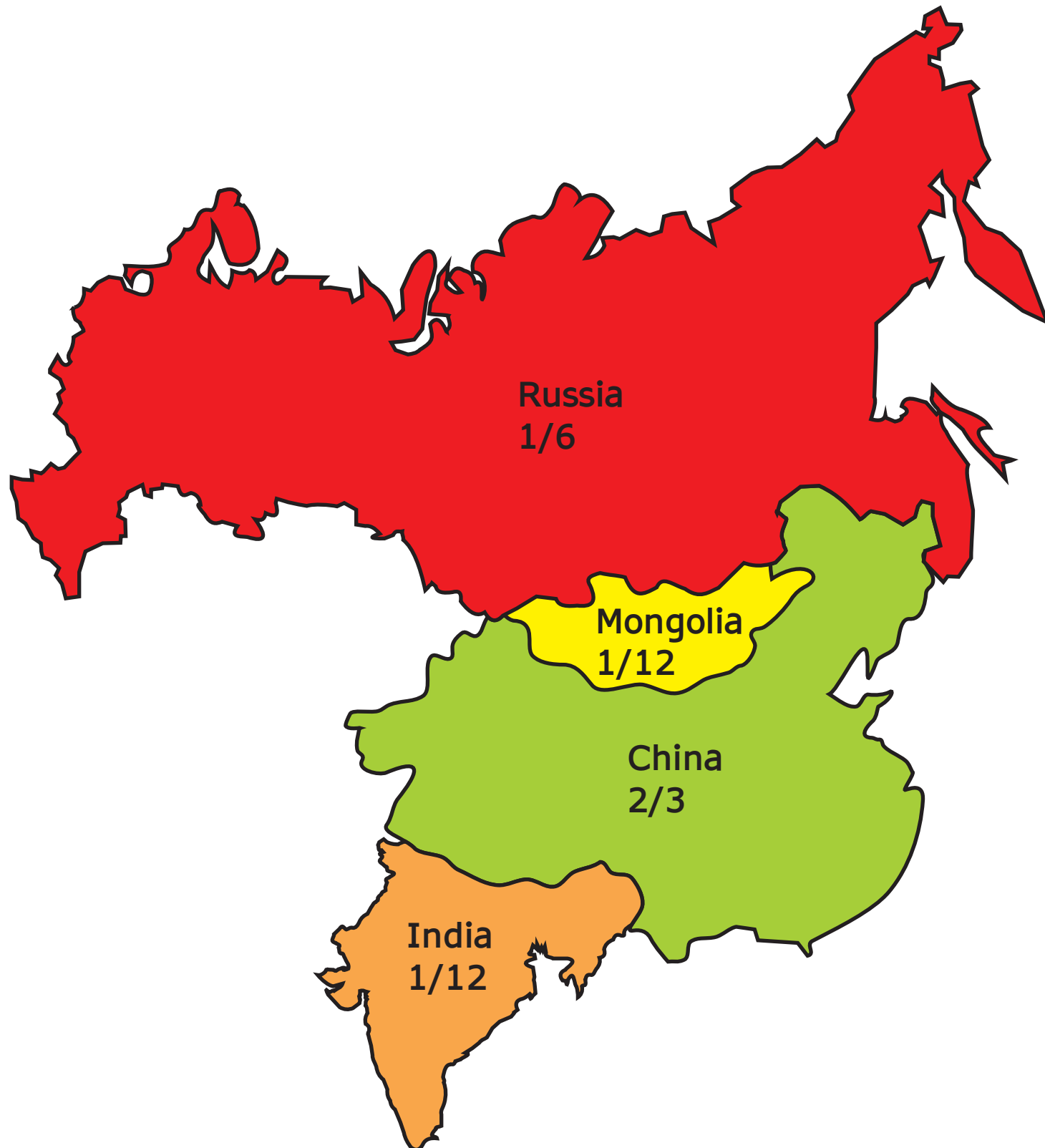


Snow Leopard



Fraction of Snow Leopard Habitat by Country



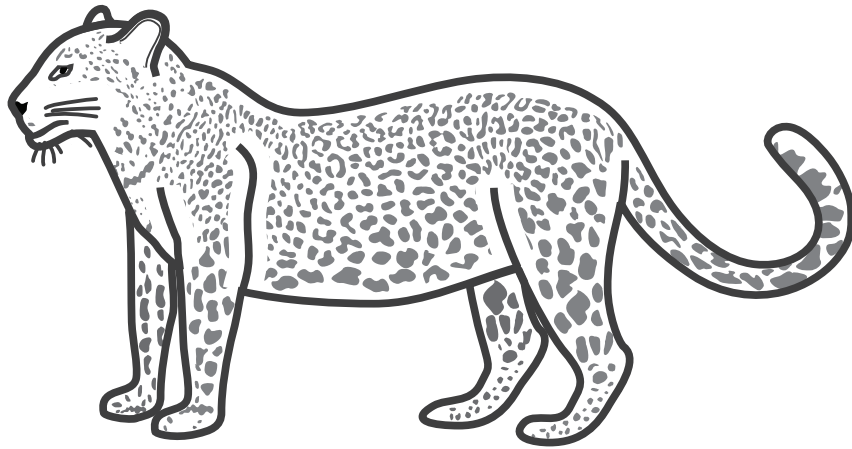
Fraction of Diet by Food Type

Type of Food	Fraction of Diet
Wild Sheep	$\frac{3}{5}$
Birds and Small Animals	$\frac{1}{4}$
Domestic Sheep	$\frac{3}{20}$

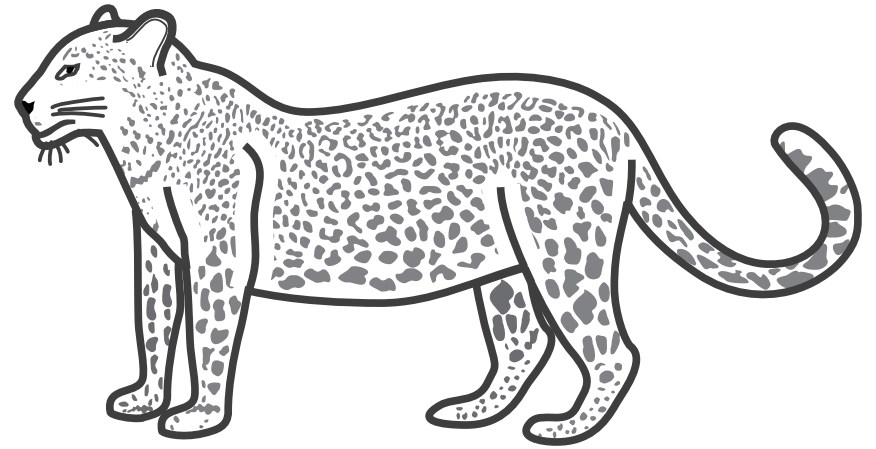
Leaping Distance for Three Snow Leopards

Snow Leopard	Leaping Distance in Yards
A	11 $\frac{1}{6}$
B	10 $\frac{1}{3}$
C	8 $\frac{3}{4}$

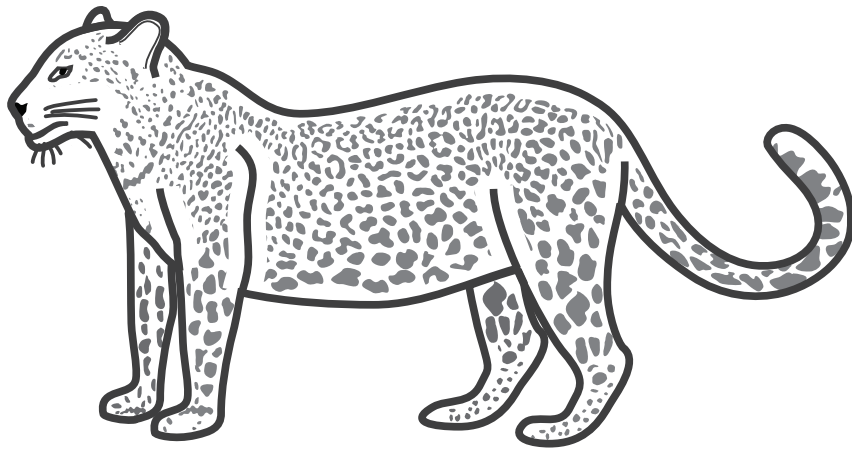
Weight in Pounds for Four Snow Leopards



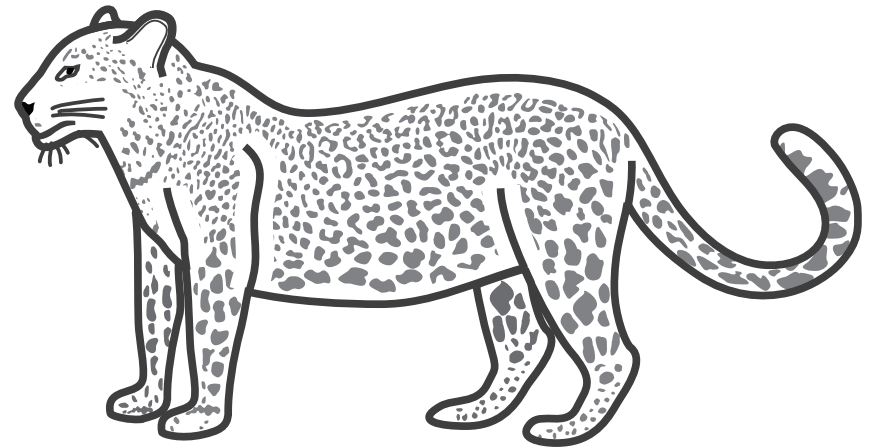
65 1/2 lbs.



80 lbs.



90 3/4 lbs.



105 1/4 lbs.